

YEAR 7 Numeracy Test

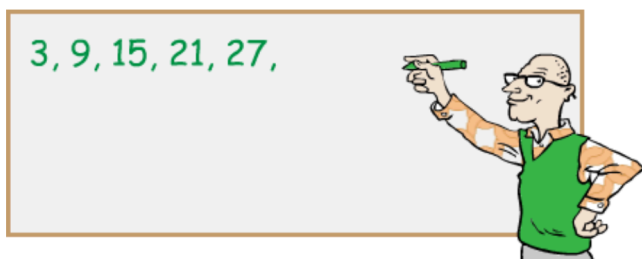
Free Test

Finish Test

1 2 3 4 5 6 7 8 9 10 11 12 13 14 15 16

Question 1 of 16

Next



The first five terms (numbers) in a number pattern are 3, 9, 15, 21, 27.

Which term of this pattern is equal to 99?

(This is a Non-calculator Test-type question: A calculator cannot be used.)

☐ 18th

☐ 17th

☐ 16th

☐ 15th

Question 2 of 16

Previous

Next



A rectangle is twice as long as it is wide. The perimeter of the rectangle is 36 cm.

What is the area of the rectangle?

(This is a Non-calculator Test-type question.)

☐ 72 cm²

☐ 64 cm²

☐ 48 cm²

☐ 36 cm²

Flag this question to revisit later: ●

Previous

Next

Question 3 of 16

Previous

Next

Every week Sacha's class does a test with marks out of 50. After eight tests Sacha's average (mean) mark is 39.



What would she need to score in her next (ninth) test to average 40?

(This is a Non-calculator Test-type question.)

Flag this question to revisit later: ☐

Previous

Next

Copyright © 2013 Pascal Press Pty Ltd. All Rights Reserved.

* This is not an officially endorsed publication of the NAPLAN program and is produced by Pascal Press independently of Australian governments.

YEAR 7 Numeracy Test

Free Test

Finish Test

Question 4 of 16

Previous

Next



Courtney bought a packet of chocolate biscuits, which she shared with five friends. They each had three biscuits and there were two left over. Shannon bought a packet of the same biscuits and shared it with six of his friends.

If Shannon and his friends each had the same number of biscuits, how many biscuits were left over?

(This is a Non-calculator Test-type question.)

☐ 2
 ☐ 3
 ☐ 4
 ☐ 6

Flag this question to revisit later: ☐

Previous

Next

Copyright © 2013 Pascal Press Pty Ltd. All Rights Reserved.

* This is not an officially endorsed publication of the NAPLAN program and is produced by Pascal Press independently of Australian governments.

Question 5 of 16

Previous

Next



A shipping container is loaded with nine boxes, each weighing $1\frac{1}{4}$ tonnes.

If the container itself weighs 850 kilograms, what is the total weight (in tonnes) of the loaded container?

(This is a Non-calculator Test-type question.)

Flag this question to revisit later: ☐

Previous

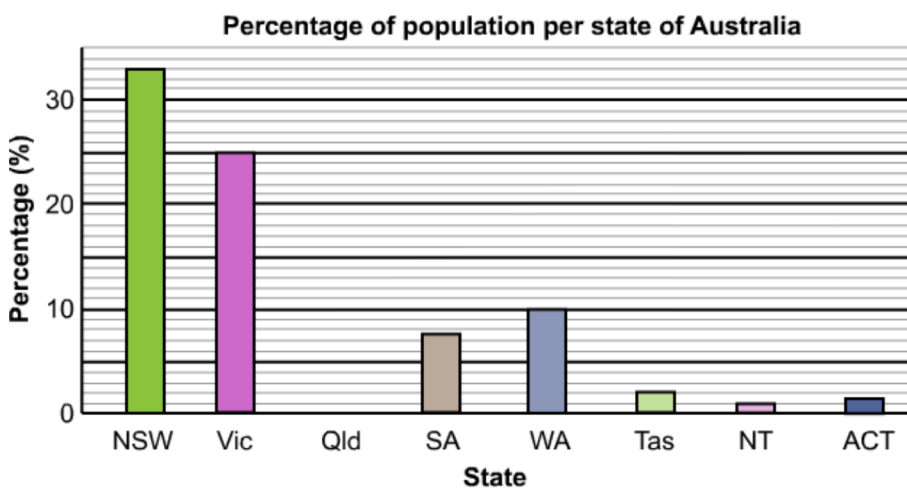
Next

Question 6 of 16

Previous

Next

The graph shows the percentage of Australia's population living in each of the states.
The percentage for Queensland is missing.



If the population of Australia is $21\frac{1}{2}$ million, what is the population of Queensland?

(This is a Non-calculator Test-type question.)

☐ 1 025 000

☐ 2 000 000

☐ 4 300 000

☐ 10 250 000

YEAR 7 Numeracy Test

Free Test

Finish Test

1 2 3 4 5 6 7 8 9 10 11 12 13 14 15 16

Question 7 of 16

Previous

Next

Which is **not** equal to $4\frac{1}{4}$?

(This is a Non-calculator Test-type question.)

$$1\frac{1}{6} + 3\frac{1}{12}$$

$$7\frac{1}{8} - 2\frac{7}{8}$$

$$2\frac{1}{2} \times 2\frac{1}{2}$$

$$2\frac{1}{8} \div \frac{1}{2}$$

Flag this question to revisit later:

Previous

Next

Copyright © 2013 Pascal Press Pty Ltd. All Rights Reserved.

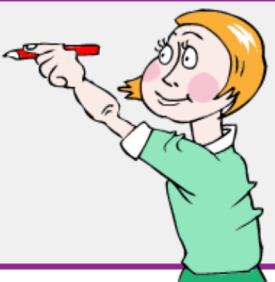
* This is not an officially endorsed publication of the NAPLAN program and is produced by Pascal Press independently of Australian governments.

Question 8 of 16

Previous

Next

0, 1, 1, 2, 3, 5, 8, 13, 21, 34, ...



Elsa wrote down the first few numbers in a special pattern.

0, 1, 1, 2, 3, 5, 8, 13, 21, 34, ...

What is the first number in this pattern that is greater than 500?

(This is a Non-calculator Test-type question.)

Submit

Flag this question to revisit later:

Previous

Next

Copyright © 2013 Pascal Press Pty Ltd. All Rights Reserved.

YEAR 7 Numeracy Test

Free Test

Finish Test

1 2 3 4 5 6 7 8 9 10 11 12 13 14 15 16

Question 9 of 16

Previous

Next

Nadia saw a clock reflected in the window at the shopping centre. This is the reflection that she saw.



What time was it?

(This is a Calculator Allowed Test-type question: A calculator can be used.)

☐ 2:35

☐ 5:45

☐ 7:15

☐ 9:25

Flag this question to revisit later: ☐

Previous

Next

The table shows the possible results when two dice are tossed together and the numbers on their uppermost faces are added together.

+	1	2	3	4	5	6
1	2	3	4	5	6	7
2	3	4	5	6	7	8
3	4	5	6	7	8	9
4	5	6	7	8	9	10
5	6	7	8	9	10	11
6	7	8	9	10	11	12



Which statement is **not** correct?

(This is a Calculator Allowed Test-type question.)

☐ There is a fifty-fifty chance of getting an even number.

☐ The chance of getting 9 is 1 in 9.

☐ There is a greater chance of getting a number greater than 10 than of getting a number less than 4.

☐ The chance of getting 7 is the same as the chance of getting either 4 or 10.

Free Test

1 2 3 4 5 6 7 8 9 10 11 12 13 14 15 16

Question 11 of 16

Previous

Next

A truck completed a journey of 48 kilometres at an average speed of 64 km/h.



How many minutes did the journey take?

(This is a Calculator Allowed Test-type question.)

Submit

Flag this question to revisit later: ☐

Previous

Next

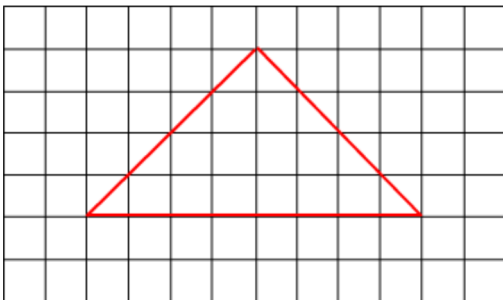
Copyright © 2013 Pascal Press Pty Ltd. All Rights Reserved.

Question 12 of 16

Previous

Next

A triangle has been drawn on grid paper.



Which statement is **not** correct?

(This is a Calculator Allowed Test-type question.)

The triangle is right-angled.

The triangle is isosceles.

The perimeter of the triangle is 16 units.

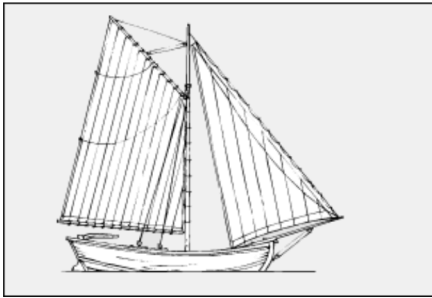
The area of the triangle is 16 units².



Question 13 of 16

Previous

Next



Ben and Iboki both made scale drawings of the same yacht. Ben used a scale of 1 cm represents 5 m. On Ben's drawing the mast is 18 cm high. On Iboki's drawing the mast is 12 cm high.

What scale is Iboki using?

(This is a Calculator Allowed Test-type question.)

☐ 1 to 750

☐ 1 to 75

☐ 1 to 33

☐ 1 to 7.5

Flag this question to revisit later: ☐

Previous

Next

YES OPTUS 10:12 AM 97%

Excel Test Zone

www.exceltestzone.com.au/test_centre/question/?q=14

YEAR 7 Numeracy Test Free Test Finish Test

1 2 3 4 5 6 7 8 9 10 11 12 13 14 15 16

Question 14 of 16

Previous Next

In the first diagram, three regular hexagons meet at a point. In the second diagram a regular hexagon, a regular dodecagon and a square meet at a point. In both cases the three shapes fill the space around the point.

Which could **not** meet and fill the space at a point?

(This is a Calculator Allowed Test-type question.)

☐ 2 regular dodecagons and an equilateral triangle

☐ 2 regular hexagons, a square and an equilateral triangle

☐ 1 regular dodecagon, 1 square and 2 equilateral triangles

☐ 1 regular hexagon, 2 squares and an equilateral triangle

Flag this question to revisit later: ☐

Previous Next

Copyright © 2013 Pascal Press Pty Ltd. All Rights Reserved.

* This is not an officially endorsed publication of the NAPLAN program and is produced by Pascal Press independently of Australian governments.

YEAR 7 Numeracy Test
Free Test

1 2 3 4 5 6 7 8 9 10 11 12 13 14 15 16

Question 15 of 16

Previous Next

A number of figures have been made by placing pins in a board.

Figure 1 Figure 2 Figure 3 Figure 4 Figure 5

Ines and Sophie both believe they have found the rule that links the number of pins with the number of the figure.

Ines said: 'To find the number of pins, add one to the number of the figure, square that number, then take off one.'

Sophie said: 'To find the number of pins, multiply the number of the figure by the number that is two more than the number of the figure.'

Who is correct?

(This is a Calculator Allowed Test-type question.)

☐ neither Ines nor Sophie

☐ both Ines and Sophie

☐ Ines only

☐ Sophie only

Flag this question to revisit later:

Previous Next

Copyright © 2013 Pascal Press Pty Ltd. All Rights Reserved.

* This is not an officially endorsed publication of the NAPLAN program and is produced by Pascal Press independently of Australian governments.

10:13 AM 97%

1 2 3 4 5 6 7 8 9 10 11 12 13 14 15 16

Question 16 of 16

Previous Finish Test

Wayne went on a trip to the United States of America. He had 360 US dollars in cash (US\$360) when he returned. At the airport he exchanged his money for Australian dollars. The exchange rate was $A\$1 = US\0.75 .



How much money did Wayne receive in Australian dollars?

Type your answer in the box without the \$ sign e.g. 20 or 2.20.

(This is a Calculator Allowed Test-type question.)

Submit